

Derivatives Daily

Nifty Highlights

	Nifty (Spot)	Nifty (Sep)	Prem./Disc.	COC (Sep)	Nifty Fut OI	PCR OI	PCR Vol	Nifty ATM IV	Nifty HV
CURRENT	4,126.90	4,143.35	16.45	72.75	41,355,600	0.95	0.98	37.36	46.35
PREVIOUS	4,245.25	4,235.90	-9.35	(26.80)	39,716,150	1.00	0.83	35.67	46.60
% CHANGE	(2.79)	(2.18)	-	-	4.13	-	-	-	-

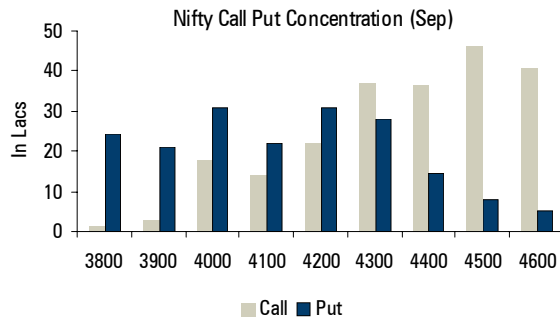
Derivative Comments:

- The Nifty futures witnessed a net addition in OI of 4.13% along with a fall in Nifty futures price by 2.18% indicating fresh short build up. FII's have shorted Index Futures to the tune of 802 crores. However, they have been net buyers in Index options to the tune of 636 crore.
- The 4200 Put has seen unwinding of 17375 contracts in yesterday's trade. The 4100 Call has added 3239 contracts along with a rise in IV indicating more of buying in this strike price option. Also, the 4200 and 4300 Call has observed a similar trend. The 4100 level may continue to act as a good support for the Nifty on a closing basis.
- FII's have been net sellers to the tune of 924 crore in the cash segment whereas DII's have bought 68.77 crore.
- Stocks currently trading at a significant premium are NAUKRI, THERMAX, TV-18, MAHLIFE and GVKPIL.

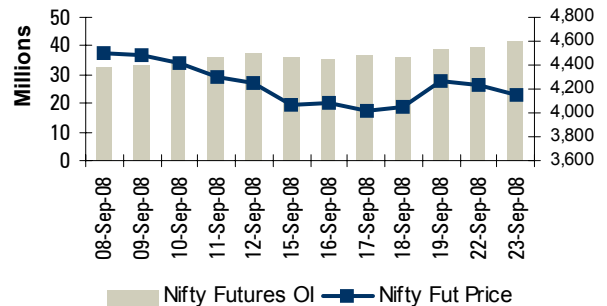
Market Outlook:

- Indian equities opened negative on the back of weak global market and continued their downtrend. The CNX Nifty closed almost at the low point of the day at 4126 levels. The market breadth was negative, 921 advances against 1029 declines.
- On the daily chart, the Nifty formed a bearish candle and the close at the low point of the day clearly indicates we can see some more downtrend in the coming days. The Nifty, as expected, in yesterday's trade continued its downward journey and has solid resistance at the 50 days simple moving average.
- The immediate supports for the Nifty are 4085, 4045 and resistances are at 4180 and 4224.

Nifty Options OI Distribution



Nifty OI vs. Futures Price



Open Interest Gainers

Scrip	Open Interest	OI Change (%)	Price	Price Change (%)
DCHL	511,700	155.08	102.75	-12.78
GTOFFSHORE	1,048,750	115.68	536.25	0.72
NIITLTD	1,496,400	42.54	58.55	-5.34
AKRUTI	1,279,800	40.84	972.00	3.46
ROLTA	1,521,900	29.88	262.70	-8.74

Open Interest Losers

Scrip	Open Interest	OI Change (%)	Price	Price Change (%)
THERMAX	900	-33.33	438.80	-0.86
J&KBANK	2,700	-25	464.00	0.21
MCDOWELL-N	242,500	-14.05	1300.05	-1.00
RECLTD	1,868,100	-12.43	81.95	0.86
CORPBANK	46,800	-12.36	275.25	-0.88

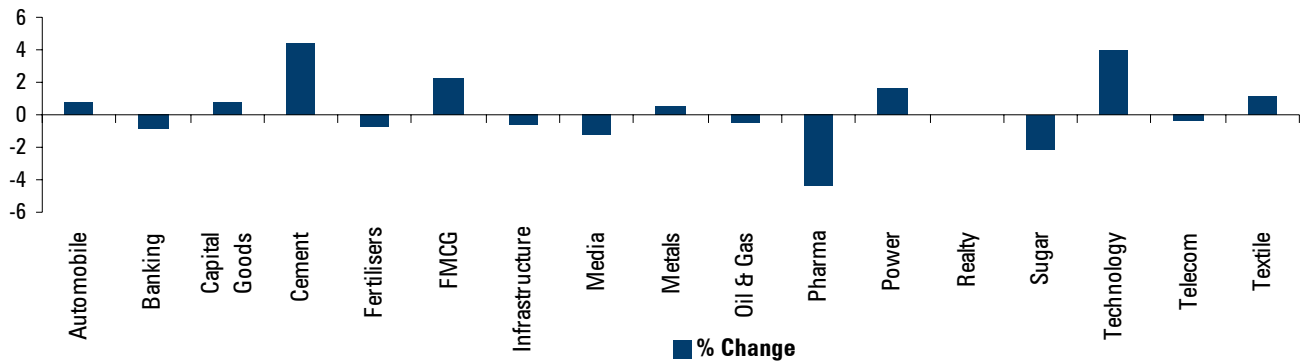
FII Statistics (Provisional)

Instrument	Buy (Rs. In Cr.)	Sell (Rs. In Cr.)	Net (Rs. In Cr.)	Open Interest	
				No. of Contract	Change (%)
Index fut.	4391.89	5194.83	-802.94	781314	3.83
Index opt.	1028.77	391.96	636.81	1176542	2.88
Stock fut.	3855.70	3936.46	-80.75	1314293	0.91
Stock opt.	1.36	29.47	-28.10	111064	0.94
Total	9277.72	9552.71	-274.98	3383213	2.25

Market Turnover

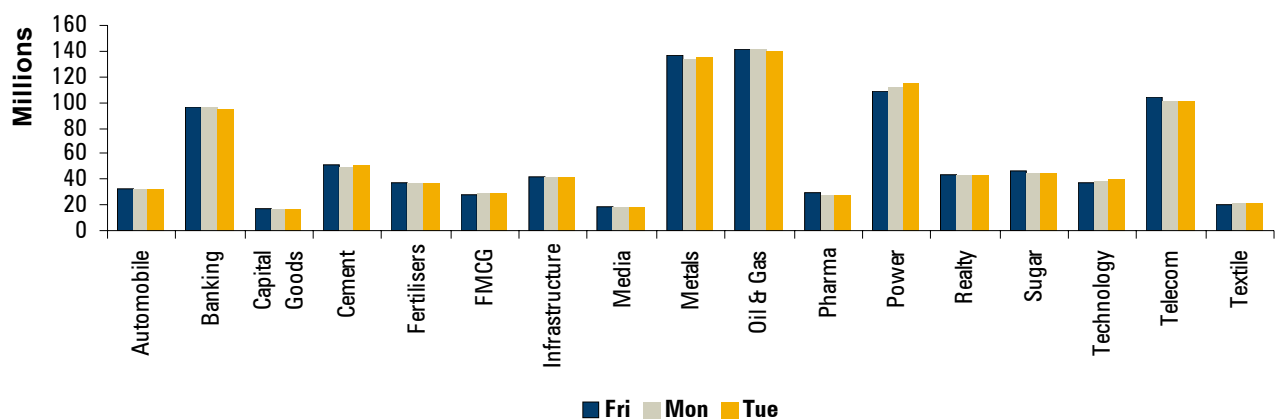
Instrument	No. of Contracts	Turnover (Rs. In Cr.)	Change (%)
Index fut.	1134885	22665.33	21.75
Index opt.	1299102	21324.51	18.00
Stock fut.	1099853	23428.42	14.81
Stock opt.	56055	950.4	-13.06
Total	3589895	68368.66	17.50

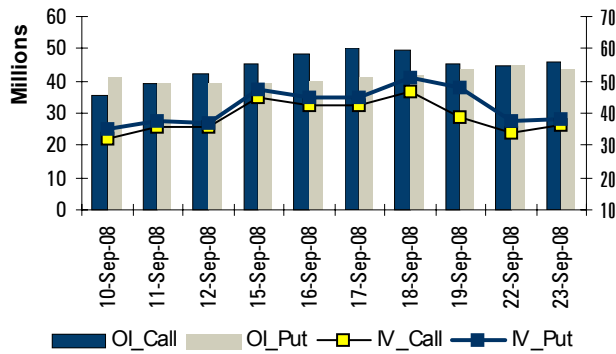
Sectoral OI Change (Day on Day):



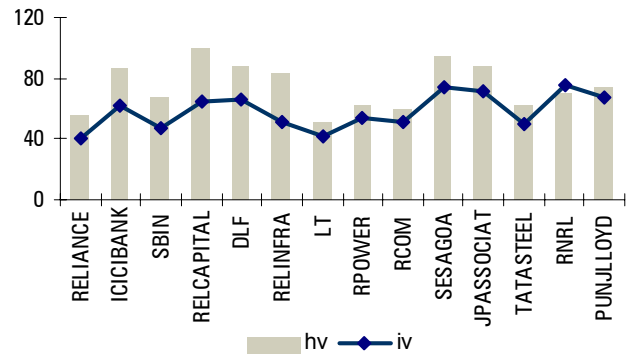
- The technology sector has seen the maximum addition of OI. Stocks like NIITLTD, PATNI, ROLTA & INFOSYSTCH have seen significant build up of positions. INFOSYSTCH & SATYAMCOMP have seen short build up.
- Cement sector has observed good build up. JPASSOCIAT from cement has seen short build up while pharma stocks were OI Losers. RANBAXY witnessed long unwinding.

Sector wise OI Trend (Last three days)



Put Call - OI vs. IV


- The implied volatility of Call has increased to 36.36, whereas that of Puts has increased to 38.36 levels.

Top Traded Stocks – IV vs. HV


- Implied volatility of counters like RNRL is above historical volatility.

Top 10 Traded Stock Options

Stock	Expiry	Strike	Option	LTP	%chg	OI	%chg	IV
RELIANCE	25-Sep-08	2,100	CA	7.50	-57.75	431,925	3.32	60.77
RELINFRA	29-Oct-08	900	CA	43.10	-14.48	483,552	30.02	53.96
RELIANCE	25-Sep-08	2,100	PA	90.50	30.22	317,325	-3.69	55.57
RELIANCE	25-Sep-08	2,070	CA	11.60	-56.80	88,275	14.16	57.23
RELIANCE	25-Sep-08	2,040	CA	19.70	-54.24	73,275	12.04	56.69
RELIANCE	25-Sep-08	2,010	PA	29.05	23.62	62,925	3.97	45.94
RELIANCE	25-Sep-08	2,010	CA	33.65	-40.50	132,225	3.16	59.70
RPOWER	25-Sep-08	160	CA	3.45	6.15	548,500	6.92	71.38
ICICIBANK	25-Sep-08	620	CA	4.95	-79.96	246,575	9.91	70.90
RELIANCE	25-Sep-08	2,040	PA	43.15	21.04	78,975	4.78	37.67

- Call writing was witnessed in out of the money Calls of RELIANCE.

Open Interest Break-up (Provisional)

	Current (in Crs)	Previous (in Crs)	% Change
Market wide	85879	84563	1.56
All Futures	43473	42489	2.32
All Options	42406	42074	0.79
Stock Futures	25739	25498	0.94
Stock Options	4980	4890	1.85
FII	63745	63751	-0.01

The total marketwide OI stood at 85879 crore, whereas stock options OI has significantly surged by 1.85%.

Top Price Gainers

Security	Current Future Price	Previous Future Price	% Change in Future Price
SYNDIBANK	66.50	64.00	3.91
AKRUTI	972	939.5	3.46
ORCHIDCHEM	224.70	218.05	3.05
SUNPHARMA	1470.2	1426.9	3.03
HCL-INSYS	101.95	99.25	2.72

Top Price Losers

Security	Current Future Price	Previous Future Price	% Change in Future Price
DCHL	102.75	117.80	-12.78
SREINTFIN	74.8	85.05	-12.05
RANBAXY	310.25	345.30	-10.15
ROLTA	262.7	287.85	-8.74
SINTEX	282.70	308.80	-8.45

Top Future Volume Gainers

Security Name	Current Future Vol (contracts)	Current Cash Vol	Cash Delivery Qty	Delivery %
RELIANCE	128,676	5184886	1597270	30.81
ICICIBANK	75,336	7435653	1818403	24.46
SBIN	61,685	2178209	486730	22.35
RELCAPITAL	49,907	4479520	736056	16.43
DLF	36,272	7892275	2257754	28.61

Top Future Volume Losers

Security Name	Current Future Vol (contracts)	Current Cash Vol	Cash Delivery Qty	Delivery %
BOSCHLTD	1	236	169	71.61
ABGSHIP	2	27919	22840	81.81
MINDTREE	2	10731	7532	70.19
J&KBANK	3	17995	16276	90.45
SHREECEM	3	1410	815	57.80

Intraday Strategy
i) AXISBANK (UTIBAN)
Sell AXISBANK Sept Fut below Rs 685

View: Bearish
 Strategy: Short Future
 Target 1: Rs 674
 Target 2: Rs 662
 Stop Loss : Rs 692
 Market Lot: 225

ii) NATIONAL ALUMINIUM (NALCO)
Buy NALCO Sept Fut above Rs 400

View: Bullish
 Strategy: Long Future
 Target 1: Rs 409
 Target 2: Rs 415
 Stop Loss: Rs 395
 Market Lot: 575

Follow-ups

Strategy Date	Stock	View	Strategy	Price Reco	Target	Stop-loss	Profit / Loss	Comment
23-Sep-08	NTPC	Bearish	Short Future	181	178 / 176.5	182.5	2437.50	SL Triggered
23-Sep-08	ACC	Bullish	Long Future	625.01	631 / 634	622.5	938	Target 1 Almost Achieved
22-Sep-08	NTPC	Bullish	Long Future	183.5	186 / 190	182	3168.75	SL Triggered
22-Sep-08	ONGC	Bullish	Long Future	1078.05	1110 / 1139	1063	3386.25	SL Triggered
19-Sep-08	MARUTI	Bullish	Long Future	716.35	727 / 740	712	----	Not Initiated
19-Sep-08	PNB	Bullish	Long Future	518.35	529 / 537	513.05	----	Not Initiated
18-Sep-08	SUZLON	Bearish	Short Future	197	190 / 182	199.05	----	Not Initiated
18-Sep-08	DLF	Bearish	Short Future	407.1	395 / 386	410.05	----	Not Initiated

ICICIdirect Derivatives Desk

ICICI Securities Limited,
 Mafatlal House, Ground Floor,
 163, H T Parekh Marg,
 Churchgate, Mumbai – 400 020

research@icicidirect.com

DISCLAIMER: The report and information contained herein is strictly confidential and meant solely for the selected recipient and may not be altered in any way, transmitted to, copied or distributed, in part or in whole, to any other person or to the media or reproduced in any form, without prior written consent of ICICI Securities Limited. "The author of the report does not hold any investment/open position in any of the companies mentioned in this report. ICICI Securities Services Ltd (I-Sec) may be holding a small number of shares/ an open position in the above referred companies as on the date of release of this report." This report is based on information obtained from public sources and sources believed to be reliable, but no independent verification has been made nor is its accuracy or completeness guaranteed. This report and information herein is solely for informational purpose and may not be used or considered as an offer document or solicitation of offer to buy or sell or subscribe for securities or other financial instruments. Nothing in this report constitutes investment, legal, accounting and tax advice or a representation that any investment or strategy is suitable or appropriate to your specific circumstances. The securities discussed and opinions expressed in this report may not be suitable for all investors, who must make their own investment decisions, based on their own investment objectives, financial positions and needs of specific recipient. This may not be taken in substitution for the exercise of independent judgement by any recipient. The recipient should independently evaluate the investment risks. ICICI Securities Ltd and affiliates accept no liabilities for any loss or damage of any kind arising out of the use of this report. Past performance is not necessarily a guide to future performance. Actual results may differ materially from those set forth in projections. ICICI Securities Ltd may have issued other reports that are inconsistent with and reach different conclusion from the information presented in this report. This report is not directed or intended for distribution to, or use by, any person or entity who is a citizen or resident of or located in any locality, state, country or other jurisdiction, where such distribution, publication, availability or use would be contrary to law, regulation or which would subject ICICI Securities Ltd and affiliates to any registration or licensing requirement within such jurisdiction. The securities described herein may or may not be eligible for sale in all jurisdictions or to certain category of investors. Persons in whose possession this document may come are required to inform themselves of and to observe such restriction.