

# Daily Calls

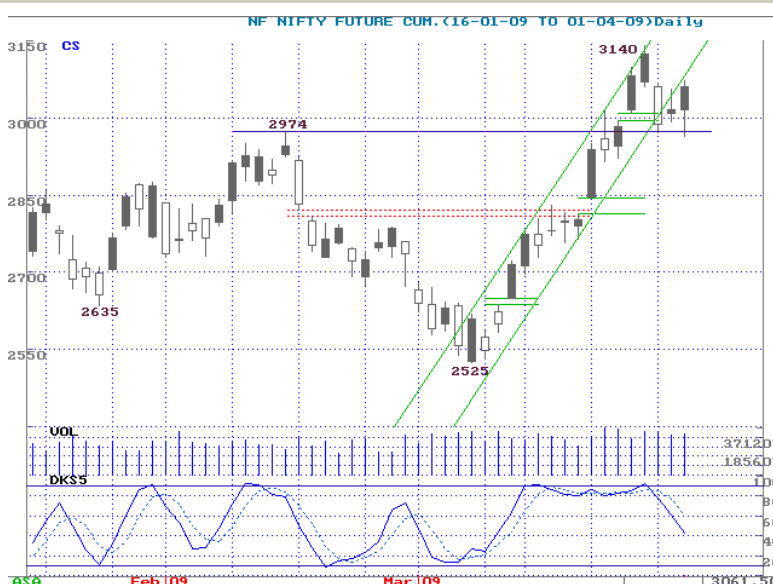
**Sensex:** We said, "Proceedings can be positive for testing Monday's falling gap. Watch for resistance at the gap however." Index moved positive, as expected, and finished 2% higher, exactly at the gap. Realty, IT, Oil& Gas, and even small-caps outperformed Sensex. A/D ratio remained positive at 4:1.

The action formed a bull candle, holding 3-day lows near 9520. Its high at 9922 covered Monday's falling gap at 9902-13, though it did not close above it. Above 9922, we may expect more positive action challenging 10K-mark again. Failure reach last week's high of 10127 may, however, keep bulls guessing ahead of holidays.



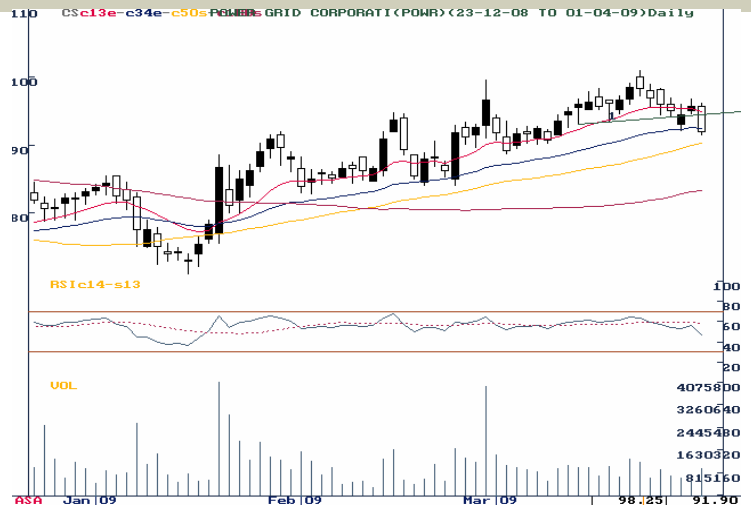
## Nifty Futures (NIFTY)

<b>CMP :</b>	3061.50
<b>Comment :</b>	Future turns into premium of 1 point from discount of 6. Holding previous high at 2974 may force entry back into the channel. Reverse if fails to reach or sustain above 3125.
<b>Action :</b>	Buy above 3062
<b>Targets :</b>	3090 / 3125 / higher
<b>Stop-loss :</b>	3060



### POWERGRID (POWGRI)

<b>CMP:</b>	92.15
<b>Comment:</b>	Price below 20 days SMA and RSI in sell mode.
<b>Action:</b>	Sell below 93.80
<b>Targets:</b>	92/91 /Lower
<b>Stop-loss:</b>	94.50



### SUNPHARMA (SUNPHA)

<b>CMP:</b>	1073.95
<b>Comment:</b>	Price fall with volume and RSI in sell mode
<b>Action :</b>	Sell below 1066
<b>Targets:</b>	1056/1048 /Lower
<b>Stop-loss</b>	1071



### STATE BANK OF INDIA (STABAN)

<b>CMP:</b>	1071.55
<b>Comment:</b>	Price above 50 days SMA and RSI in buy mode.
<b>Action :</b>	Buy above 1076
<b>Targets:</b>	1086/ 1099 /Higher
<b>Stop-loss</b>	1070



## STEEL AUTHORITY OF INDIA (SAIL)

<b>CMP:</b>	97.80
<b>Comment:</b>	Taking support at 144 days SMA and price rise with volume.
<b>Action :</b>	Buy above 98.20
<b>Targets:</b>	99.50/ 100.50 /Higher
<b>Stop-loss</b>	97.50



### Previous day's Performance Review

Counter	Action	Targets	Comments	Return opportunity
Nifty Future	Sell below 3066	3017/2995/-	Lost : 3011 to 2964	47 points
ONGC	Sell below 792	783/775/-	No trade (Opened at Target)	0.00%
HDFC	Sell below 1400	1390/1375/-	No trade	0.00%
ABB	Buy above 426.50	432/437/+	Gained : 429 to 431.90	0.67%
ITC	Buy above 183.50	186/189/+	Gained : 183.50 to 185.95	1.34%

Nifty Points gained for the day: 47

Cum. gains over last 1 day: 14571 points

Stock profits: Average 1.50% per trade

Cum. Profits over last 1 day: 3.00%

Strike Rate for the day: 2/2

Cum. Strike Rate over 1 day: 2/2 (100%)

### Performance: 2007-08

Nifty Points gained: 16627  
Stock Profits: 783.2%  
Strike Rate: 90%

### Performance: 2008-09

Nifty Points gained: 14524  
Stock Profits: 956.46%  
Strike Rate: 88.25%

STOCK	CLOSE	S1	S2	S3	R1	R2	R3	TREND
SENSEX	9901.99	9846.05	9752.10	9658.20	10033.85	10103.60	10173.40	+ve
NIFTY	3060.35	3046.05	3020.15	2994.25	3097.85	3119.85	3141.80	+ve
ACC	586.85	585.55	581.10	576.65	594.45	604.15	613.85	+ve
ANDHRA BANK	46.00	45.90	45.60	45.25	46.55	47.40	48.20	+ve
ARVIND	14.00	13.95	13.75	13.55	14.35	14.45	14.60	+ve
BAJAJ HOLDING	297.05	294.75	292.80	286.10	298.70	300.65	307.35	Neutral
BALAJI TELE	29.00	28.60	28.00	27.35	29.80	30.40	31.05	Neutral
BOB	232.50	233.40	229.35	225.30	241.50	247.20	252.95	+ve
BOI	220.30	217.30	214.55	209.70	222.80	225.55	230.35	Neutral
BEL	894.90	894.95	887.95	880.95	908.95	915.50	922.05	+ve
BPCL	364.80	357.40	354.50	351.55	367.25	372.15	377.05	-ve
BHEL	1470.15	1436.15	1422.40	1408.65	1475.55	1495.30	1515.00	-ve
CANARA BANK	163.40	158.20	154.95	151.70	163.75	166.50	169.30	-ve
CENTURY TEXT.	220.10	216.10	212.95	210.05	222.40	225.50	228.40	Neutral
CIPLA	218.85	215.90	214.40	212.90	218.40	219.70	220.95	-ve
DR.REDDY'S LAB.	482.00	473.20	464.75	456.35	483.05	488.00	492.90	-ve
GAIL	249.20	247.65	244.00	240.30	255.00	259.80	264.60	+ve
GEOMETRIC	16.05	15.75	15.35	14.95	16.60	16.75	16.95	+ve
GRASIM	1548.35	1528.95	1513.10	1497.30	1553.90	1566.35	1578.85	-ve
AMBUJA CEMENT	71.75	71.60	71.05	70.50	72.75	73.95	75.20	+ve
HCL TECH	100.75	99.15	97.85	96.50	100.90	101.80	102.65	-ve
HDFC BANK	1000.00	992.75	979.40	966.05	1019.45	1040.35	1061.20	+ve
HDFC	1505.80	1492.30	1465.15	1438.00	1546.60	1571.50	1596.45	+ve
HERO HONDA	1039.75	1018.55	1009.80	1001.05	1044.50	1057.50	1070.50	-ve
HEXWARE TECHNOL	26.90	26.95	26.50	26.00	27.90	28.15	28.40	+ve
HINDALCO	52.85	52.00	51.40	50.40	53.20	53.80	54.80	Neutral
HINDUSTAN UNILEVER	236.45	229.60	228.05	226.50	235.85	238.95	242.10	-ve
HPCL	263.75	259.85	257.20	254.50	265.05	267.65	270.25	-ve
HINDUJA TMT	98.45	97.80	96.05	94.30	101.30	103.05	104.80	+ve
ICICI BANK	349.35	345.80	338.25	330.70	360.95	368.95	376.95	+ve
IDBI	46.50	46.25	45.70	45.10	47.45	48.40	49.35	+ve
I-FLEX SOLUTION	784.85	778.55	766.60	754.65	802.50	810.70	818.90	+ve
IOC	392.05	392.55	389.85	387.20	397.95	402.65	407.35	+ve
INFOTECH ENT.	87.10	87.40	85.40	83.45	91.40	92.05	92.70	+ve
INFOSYS	1373.75	1363.40	1344.75	1326.10	1400.70	1410.40	1420.15	+ve
ITC	184.35	182.10	180.45	178.40	185.40	187.10	189.10	Neutral
JINDAL SAW	179.25	179.70	177.95	176.25	183.15	187.65	192.15	+ve
KPIT CUMMINS	26.50	26.50	26.10	25.70	27.30	27.55	27.80	+ve
LARSEN & TOUBRO	672.45	666.75	660.85	651.30	678.55	684.45	694.05	Neutral
LIC HOUSING	231.50	230.95	228.50	226.05	235.85	238.95	242.05	+ve

M & M	394.95	394.85	386.25	377.65	412.05	420.65	429.25	+ve
MARUTI SUZUKI	792.50	789.00	780.50	772.05	806.00	815.30	824.65	+ve
MASTEK	124.40	123.45	120.90	118.35	128.55	129.30	130.05	+ve
MTNL	69.75	69.60	69.00	68.35	70.90	71.55	72.25	+ve
NALCO	216.65	212.85	210.00	204.10	218.55	221.40	227.30	Neutral
NTPC	178.50	176.20	174.10	172.00	178.45	179.55	180.65	-ve
ONGC	804.30	796.40	781.70	767.05	825.75	838.85	851.95	+ve
OBC	113.95	113.20	111.15	109.10	117.35	119.15	120.95	+ve
POLARIS	47.55	47.40	46.20	45.00	49.75	50.20	50.60	+ve
PNB	405.75	392.05	382.90	373.75	405.85	412.75	419.65	-ve
RANBAXY	178.50	176.80	173.25	169.75	183.90	186.50	189.10	+ve
RELIANCE INFRA.	550.00	544.50	531.35	518.25	570.75	578.10	585.50	+ve
RELIANCE	1581.25	1569.40	1545.25	1521.05	1617.70	1626.95	1636.20	+ve
ROLTA INDIA	61.20	60.65	59.30	58.00	63.35	64.45	65.55	+ve
SAIL	97.45	95.75	94.35	92.95	98.55	100.00	101.35	Neutral
SATYAM	39.65	39.85	38.75	37.65	42.10	42.60	43.15	+ve
SCI	78.55	78.45	77.60	76.75	80.20	81.20	82.20	+ve
SBI	1077.45	1069.65	1054.30	1038.95	1100.35	1122.80	1145.30	+ve
SYNDICATE BANK	48.65	48.55	48.05	47.55	49.60	50.35	51.10	+ve
TATA CHEMICALS	143.00	141.50	139.90	138.05	144.60	146.15	148.05	Neutral
TATA MOTORS	180.00	177.60	175.30	171.85	182.25	184.60	188.00	Neutral
TATA POWER	793.70	789.35	779.70	770.05	808.70	824.55	840.45	+ve
TATA TEA	583.90	579.40	574.75	569.10	588.65	593.25	598.90	Neutral
TCS	544.50	542.05	533.70	525.40	558.70	563.85	569.00	+ve
TATA STEEL	209.80	206.65	204.05	199.95	211.85	214.50	218.55	Neutral
UBI	147.25	144.35	142.05	137.30	149.00	151.35	156.10	Neutral
TATA COMM.	520.15	520.10	515.10	510.15	530.05	534.05	538.05	+ve
WIPRO	252.40	250.75	247.10	243.45	258.00	260.85	263.65	+ve
ZEE	106.15	105.35	104.65	103.80	106.75	107.45	108.35	Neutral

RESEARCH BASKET					
Research Product	Perspective	Frequency	Time frame	Avg. Returns objective	Location on ICICIdirect.com
<b>Pre-market open view</b>					
<a href="#">Opening Bell</a>	Daily comprehensive snapshot containing information & in-depth analysis of Indian & US markets, major headlines, technical view on the indices & news events on major frontline stocks.	Pre-market open – Daily	1 Day	1 - 2%	Home Page, Trading Page- Scroller & iCLICK-2-GAIN
<a href="#">Daily Technical</a>	Features three stocks with a trading outlook for the day based on short-term technical trends considering key technical indicators & statistical information.				Home page-Trading recommendation, Research page- Technical recommendations
<a href="#">Daily Derivative</a>	Trading strategy for a day in the futures & options segment based on news events, market trends, technical & other factors governing movements in stocks.				Home page-Trading recommendation, Research page- Technical recommendations, Trading Page - Scroller
<a href="#">Advanced Derivative Strategies</a>	Provides simplified Derivative strategies such as Spreads and Covered calls	Daily			iClick-2-Gain
<b>Intra-day Technical recommendations</b>					
<a href="#">BTST Calls</a> <a href="#">Margin Calls</a> <a href="#">Derivative Calls</a>	Based on short term technical trends and stock specific news/news expectations.	Daily	1 – 2 Days	1 - 2%	Trading Page - iCLICK-2-GAIN
<b>Weekly recommendations</b>					
<a href="#">Weekly Technicals</a>	Features stocks with a trading outlook for a week based on short-term technical trends considering key technical indicators & statistical information.	Weekly	1-7 days	4 – 5%	Home Page & Research Page
<a href="#">Weekly Derivatives</a>	Trading opportunities in futures & options segment based on fundamental & technical analysis also incorporates factors such as overall market trend, volatility & open interest positions of securities.	Weekly			Home Page, Research Page & Trading page -Scroller
<a href="#">Pick of the week</a>	Every week one stock on fundamental and/or technical parameters which have a potential to appreciate by 20% in a 3-6 month timeframe.	Weekly – every Friday	3 – 6 mths	20%	Home Page, Research page, Scroller & Trading page - iClick to Gain
<b>Short -Medium term recommendations</b>					
<a href="#">Stock Picks : Detailed Company Report</a>	Fundamental report understanding the business model and future prospects of the company & valuations.	When published	> 1 yr	> 20% & above	Home page, Research page & Trading page - Scroller, iCLICK-2-GAIN & iClick-2-Invest
<a href="#">Stocks on move</a>	Covers stocks which are likely to show significant upward movement in the next 15 days due to change in trader sentiment.	Fortnightly – every alternate Wednesday	> 7-15 days	5 – 7%	Home page, Research page & Trading page - Scroller iCLICK-2-GAIN
<a href="#">Monthly Technicals</a>	Trading outlook for a month based on medium-term technical trends considering key technical indicators & statistical information.	Monthly	30 days	10%	Home Page & Research Page
<a href="#">Equity Model Portfolio</a>	A portfolio based on your Risk appetite: Conservative, Moderate and Aggressive				iClick-2-Gain
<a href="#">High Dividend Yield Stocks</a>	Features High Dividend Yielding Stocks for assured returns on investment				iClick-2-Gain

NOTES :

- The Sell below / above price is a key technical level which decides the trend for the day
- Once the call is initiated, an appropriate Stop Loss trigger should be put for the trade
- Once into position, put trailing stops to preserve your profits
- Be careful if the counter achieves the target immediately after opening
- The strategies are valid only for the date mentioned at the top
- Positions should be squared off by the end of the day
- Only stocks in derivatives segment have been considered for daily trading
- Chart shows 50 days on NSE cash market, with 5/8/13/21 day EMAs, volumes & 5-day Slow Stochastics
- The vertical grids show weeks, horizontal grids are price-aligned
- The writer may have position in the stocks discussed
- The strategies are based on intra-day volatility, suggesting a two-way approach intra-day
- Medium to long-term prospects of a stock does not have any bearing on the daily view

**MOST IMP:** The follow-up and performance review table of the strategies indicates the profit opportunity that was available in the strategies. Individual profits may vary, depending upon the entry and exit price and stop losses.

---

**ICICIdirect.com Technical Desk**

**ICICI Securities Limited,**  
Mafatlal House, Ground Floor,  
163, H T Parekh Marg,  
Churchgate, Mumbai – 400 020

**research@icicidirect.com**

---

**DISCLAIMER:** The report and information contained herein is strictly confidential and meant solely for the selected recipient and may not be altered in any way, transmitted to, copied or distributed, in part or in whole, to any other person or to the media or reproduced in any form, without prior written consent of ICICI Securities Limited. "The author of the report does not hold any investment/open position in any of the companies mentioned in this report. ICICI Securities Services Ltd (I-Sec) may be holding a small number of shares/ an open position in the above referred companies as on the date of release of this report." This report is based on information obtained from public sources and sources believed to be reliable, but no independent verification has been made nor is its accuracy or completeness guaranteed. This report and information herein is solely for informational purpose and may not be used or considered as an offer document or solicitation of offer to buy or sell or subscribe for securities or other financial instruments. Nothing in this report constitutes investment, legal, accounting and tax advice or a representation that any investment or strategy is suitable or appropriate to your specific circumstances. The securities discussed and opinions expressed in this report may not be suitable for all investors, who must make their own investment decisions, based on their own investment objectives, financial positions and needs of specific recipient. This may not be taken in substitution for the exercise of independent judgement by any recipient. The recipient should independently evaluate the investment risks. ICICI Securities Ltd and affiliates accept no liabilities for any loss or damage of any kind arising out of the use of this report. Past performance is not necessarily a guide to future performance. Actual results may differ materially from those set forth in projections. ICICI Securities Ltd may have issued other reports that are inconsistent with and reach different conclusion from the information presented in this report. This report is not directed or intended for distribution to, or use by, any person or entity who is a citizen or resident of or located in any locality, state, country or other jurisdiction, where such distribution, publication, availability or use would be contrary to law, regulation or which would subject ICICI Securities Ltd and affiliates to any registration or licensing requirement within such jurisdiction. The securities described herein may or may not be eligible for sale in all jurisdictions or to certain category of investors. Persons in whose possession this document may come are required to inform themselves of and to observe such restriction.